

## PRESS RELEASE

---

Düsseldorf, October 22, 2020

# JSW optimizes slab yard utilization with SMS digital's Warehouse Management System

Efficient digital optimization of planned storage capacities enables higher production



Optimization of storage capacities in the slab yard with the Warehouse Management System from SMS digital.

SMS digital, the digital subsidiary of SMS group, has been awarded with the implementation of a new highly automated slab yard management system for JSW Steel Ltd. located in Dolvi, India. The X-Pact<sup>®</sup> MES 4.0 Warehouse Management System will support the efficient use of limited-sized slab yard space and is an essential factor for a high utilization of the hot mill capacity.

JSW is expanding their Dolvi works by additional five million tons per year capacity with a new steel melt shop, which JSW ordered from SMS group in the end of 2017 and is now under commissioning. A major advantage is the digital connection of third-party equipment to SMS digital's Warehouse Management software.

Since the slab yard area at JSW is very limited, the Warehouse Management system will help to optimize space utilization with maximum efficiency. The innovative solution for warehousing and materials management is part of the support and optimization module of the production planning system X-Pact<sup>®</sup> MES 4.0 (Manufacturing Execution System). With the MES 4.0 Warehouse Manager, the cranes, including electric overhead traveling cranes (EOT) and semi gantry cranes, as well as the transport cars at JSW Dolvi will operate automatically, with maximum efficiency to enable optimum vertical networking of the production facilities and units along the whole process chain.

Available storage capacities within the slab yard can be identified quickly and efficiently.

The Warehouse Manager can take the current warehousing and vehicle situation as well as the sequences of casters and hot mill into account and finds the optimum combination to determine the ideal transfer orders. Thus, JSW can reduce costs and increase throughput through optimal warehouse and transport management.

Key factors for the decision to partner with SMS group for digitally connecting the slab yard was the high added value resulting from the strong combination from SMS digital's know-how of technology, functionality, and

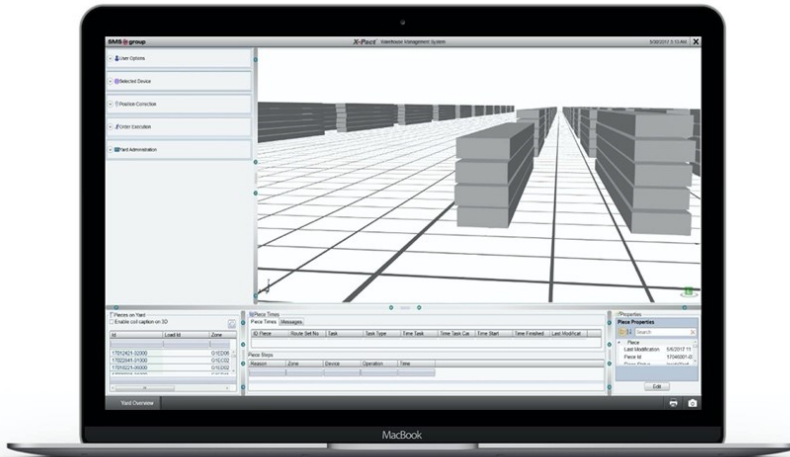
user-friendliness as well as the longstanding partnership between JSW and SMS group.

## About SMS digital

SMS digital GmbH, the digital subsidiary of SMS group GmbH, is a market leader in the digitalization of plant and machinery used to manufacture and process steel and nonferrous metals.

Working in close collaboration with its customers, SMS digital develops innovative products for the metals industry and benefits from a vast array of state-of-the-art R&D methods, metallurgical process expertise, and specialist technological know-how. With digital applications and the use of artificial intelligence, SMS digital is helping its customers move their plant and equipment successfully into the digital era.

[Visit SMS digital to learn more.](#)



X-Pact<sup>®</sup> MES 4.0 Warehouse Management System for slab yard management allows to display the stored slabs in 3D.

*SMS group is a group of companies internationally active in plant construction and mechanical engineering for the steel and nonferrous metals industry. It has some 14,000 employees who generate worldwide sales of more than EUR 2.9 billion. The sole owner of the holding company SMS GmbH is the Familie Weiss Foundation.*